

# Foreword

---

On January 11, 2011, a public meeting was held in the school cafeteria to review the work of the SPX School Sustainability Task Force. The Task Force was assembled to review the long-term viability of Catholic education at St. Pius X, as directed by the Archdiocese in keeping with the Archdiocesan Strategic Plan.

The sustainability review brings to the forefront strategic planning already being done here at St. Pius X. As is done in many businesses, we will create a three-year strategic plan. The plan includes measurable objectives in categories defined by the Archdiocese.

While our enrollment has been in decline, there is hope in projected population growth over the next twenty years. We will need to improve our marketing to promote our excellent academic programs and teaching of Catholic values.

The Task Force will make its recommendation on sustainability before the end of January. Although the Archbishop holds the final say, it is the position of this task force that SPX School can remain viable for the foreseeable future. That viability comes with challenges and opportunities. With the help of our parish community, we can preserve the tradition of Catholic education at St. Pius X.

Following this summary are the slides used at the public meeting. If you have any questions regarding this presentation, please email

Ken Jensen  
Chair, SPX School Sustainability Task Force  
[ken@wayupnorth.net](mailto:ken@wayupnorth.net)

# SPX School Sustainability Task Force

January 11, 2011

Welcome

# Task Force Members

- **Ken Jensen (Chair)**  
School Parent, School Advisory Committee member
- **Fr. John Mitchell**  
St. Pius X Pastor
- **Larry Erickson**  
Parish Business Administrator
- **Kathleen Groettum**  
SPX School Principal
- **Kitty Anderson**  
Parish Trustee
- **Brenda Barrett**  
School Parent, SPX Spanish Teacher
- **Dee Campbell**  
School Parent
- **John Chaplin**  
Parish Trustee
- **Lynn Kaiser (Secretary)**  
School Parent , School Advisory Committee member
- **Deana Klein**  
School Parent
- **Andy Muntifering**  
School Parent, Finance Committee member
- **Karen Roe**  
Parishoner
- **Deb Sandquist**  
Parish Council Chair
- **Pat Wise**  
Parish Council member

WHY A SUSTAINABILITY TASK FORCE?

# Archdiocesan Strategic Plan

- Evaluation and ongoing monitoring under Strategic Plan
- Establishment of Archdiocesan Schools Advisory Board
- All schools identified for one or more categories

# Strategic Plan (cont'd)

## Four Areas for Measuring Viability



# Strategic Plan (cont'd)

## Categories for Schools

- Urgent Review
- Sustainability Review
- Shared Resources Discussion (includes some Urgent Review and Sustainability Review schools)
- Schools Under Consideration for Special Support
- No Change at this time
- Religious Order/Independent Catholic Schools

# Sustainability Review Schools

- Direction and assistance from Archdiocese
- Ongoing monitoring for three years to measure progress in meeting viability benchmarks
- Final report: a recommendation to the Archbishop regarding long-term viability

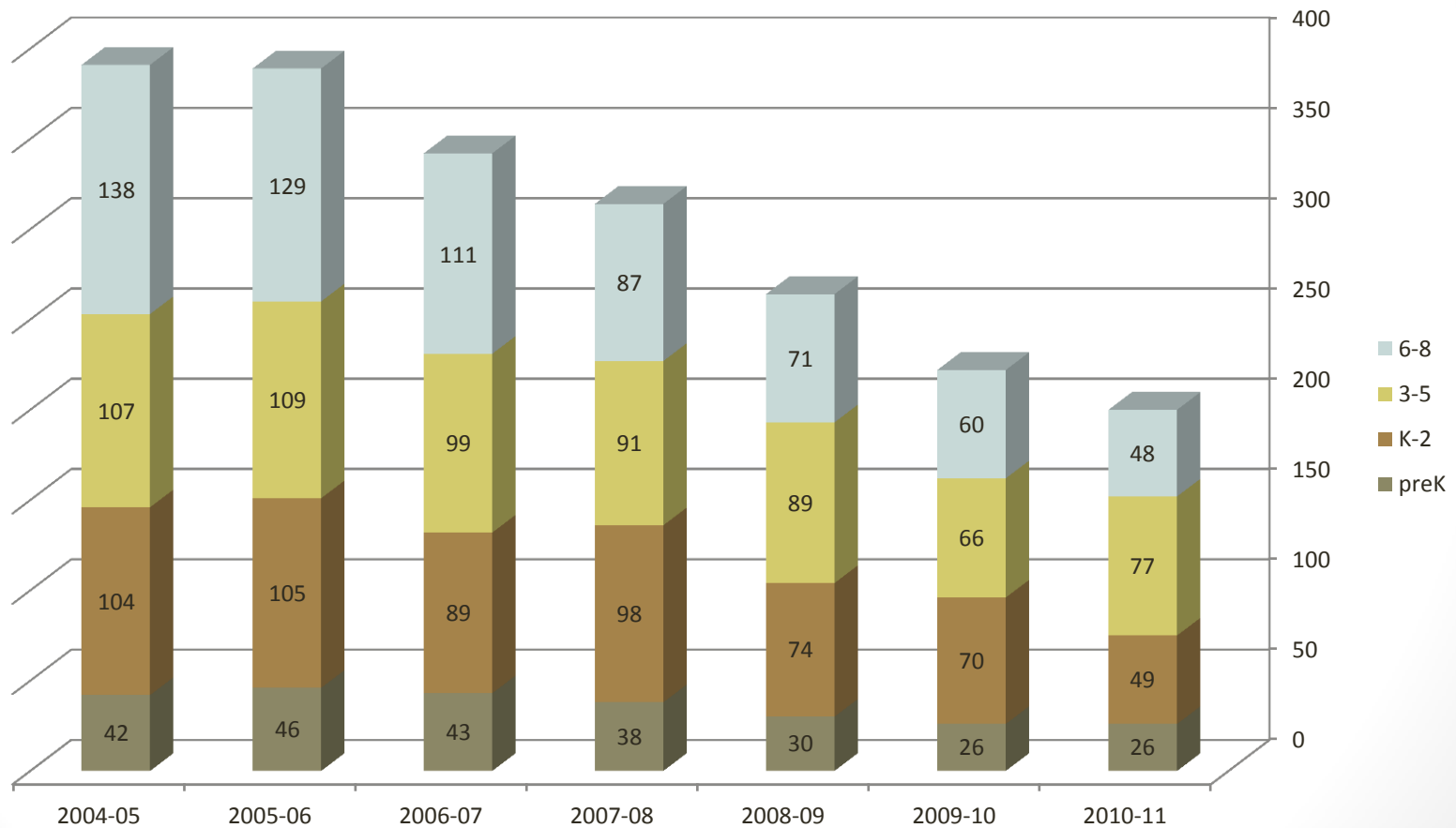
# Shared Resources Discussion

- Required to participate in structured discussions
- Possible outcomes include resource sharing and/or regional schools
- Final report: a recommendation to the Archbishop on regional solutions

# SPX SCHOOL STATISTICS

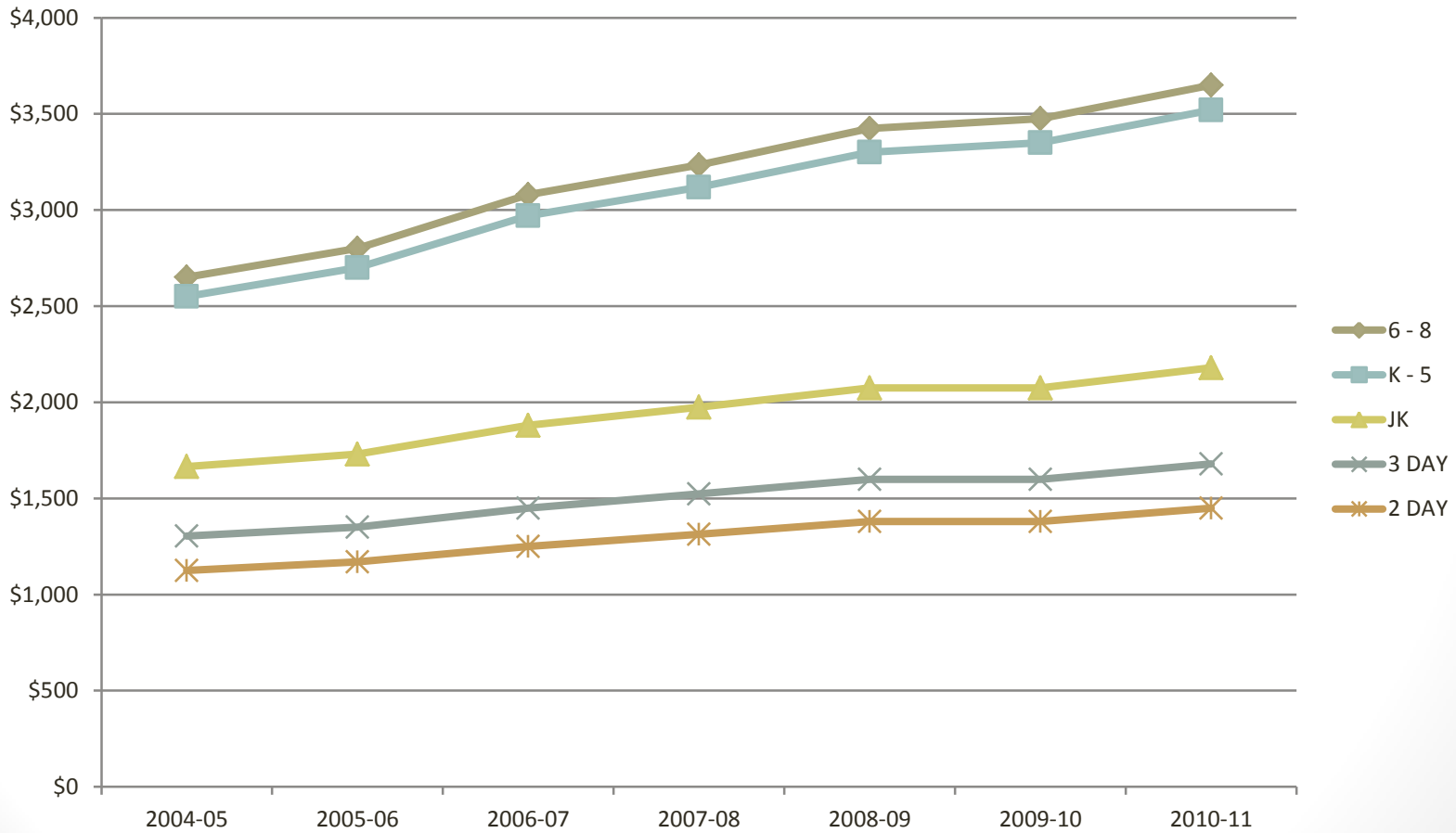
# Enrollment

## SPX School Enrollment

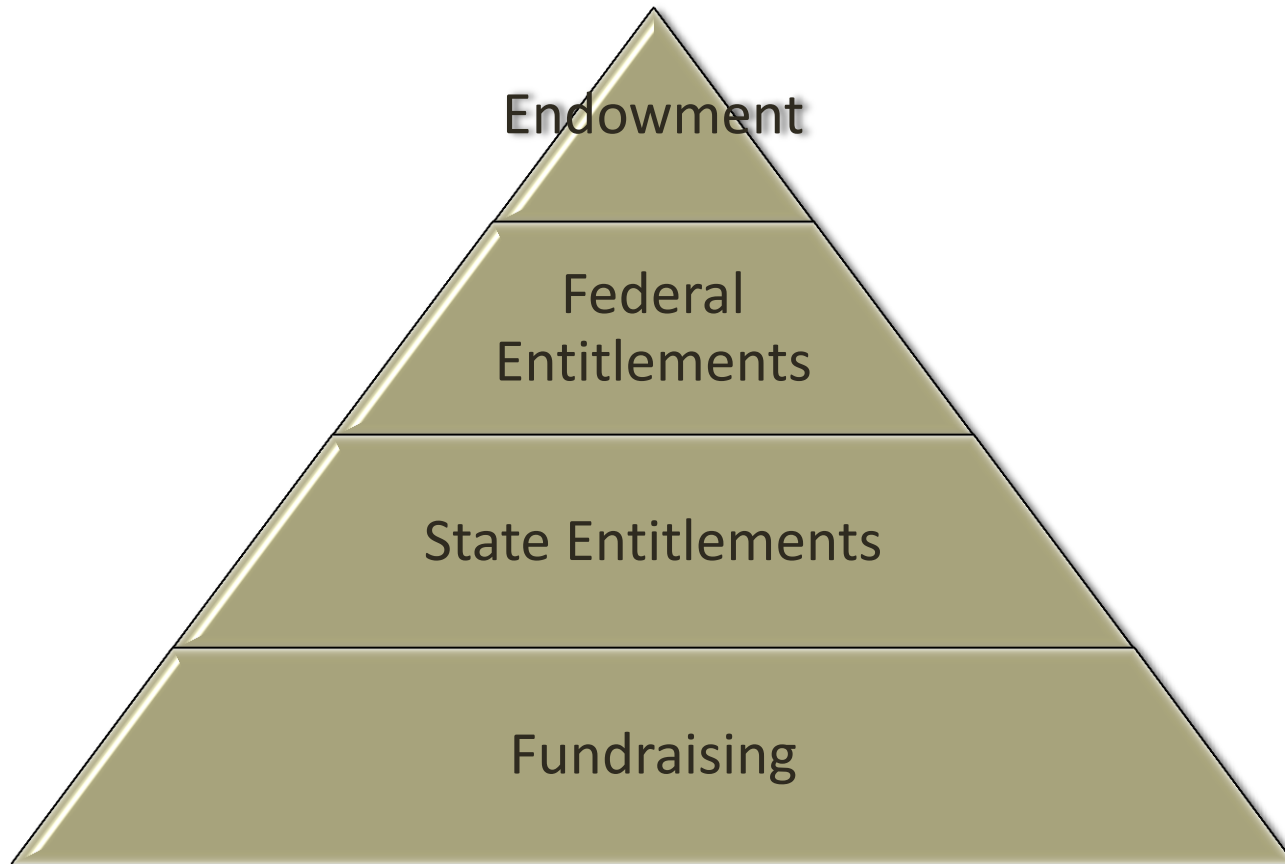


# Tuition

## SPX School Tuition



# Other Revenue



# Expenses

Salaries



Benefits



Equipment



Operations



# OUTLOOK

# Demographics

- Population Growth  
Metropolitan Council projections show significant growth in Hugo, outside of current busing routes

Municipality	Projected Growth (persons)
Hugo	25,000
North Oaks	1,500
Vadnais Heights	3,000
White Bear Lake	1,000
White Bear Township	300

MetCouncil projections as of Dec. 31, 2009  
[http://stats.metc.state.mn.us/stats/xls/Forecasts\\_Data2009.xls](http://stats.metc.state.mn.us/stats/xls/Forecasts_Data2009.xls)

# Demographics (cont'd)

- Parish composition/growth
  - Little change in the number of families registered
  - Little change in the number of school-aged children

# Capital Campaign/Parish Debt

- Majority of debt retired by end of 2014, based on successful capital campaign
- Possibility of increased parish subsidy for operational expenses and/or investment

# Possible Options

- Resource sharing
- Specialty programs to attract students
- Multiage instruction

# Next Steps

- Next Task Force meeting January 19.
- Completed report due to Archdiocese January 21.
- Shared Resource discussion with area schools in February.

Questions?

Thank you